

# SARS-CoV-2 Antibody Testing Change

## Current COVID antibody testing

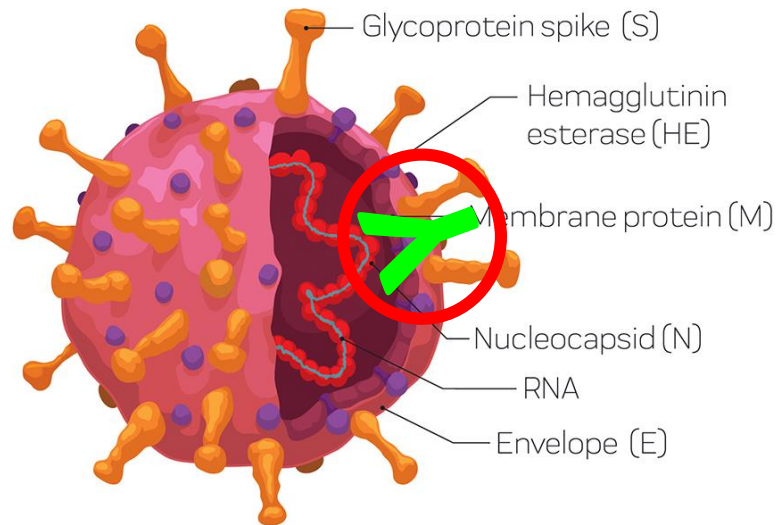
**(COVID-19 IgG Ab; Epic Code LAB9246)**

Detects antibodies targeting the nuclear capsid

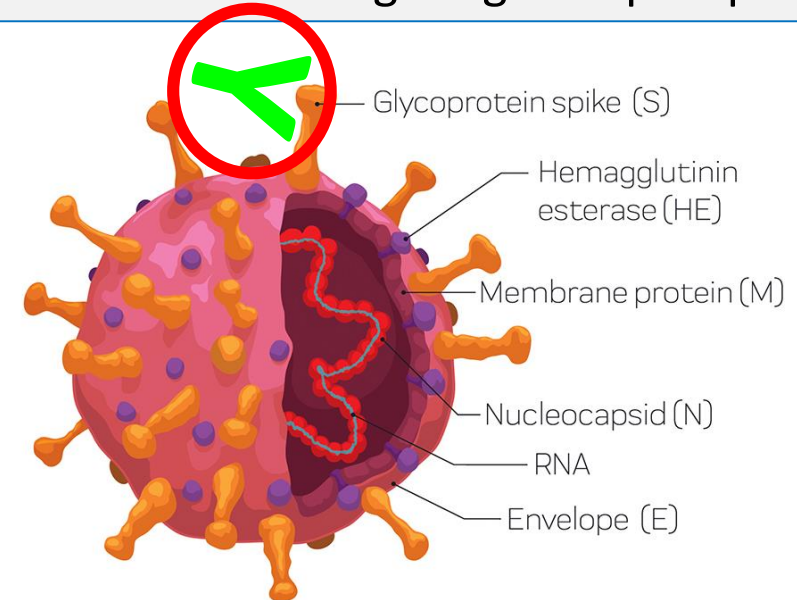
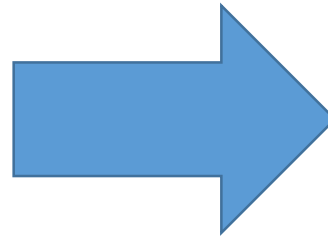
## NEW COVID antibody testing

**(COVID Spike Total Ab; Epic Code LAB9340)**

Detects antibodies targeting the spike protein



CORONAVIRUS STRUCTURE



CORONAVIRUS STRUCTURE

- Starting 11/4/2021, the current COVID antibody testing (COVID-19 IgG Ab) will be replaced with the new COVID antibody testing (COVID Spike Total Ab)
- This test is an aid in identifying individuals with an immune response to SARS-CoV-2, either through prior infection or vaccination
- This testing cannot be used to determine a patient's degree of immunity or protection from re-infection with SARS-CoV-2