

eGFR Calculation & Report Update

- Estimated Glomerular Filtration Rate (eGFR) is used to estimate the function of the kidney
- Historically, eGFR was calculated with an adjustment factor for African-American patients
- eGFR is calculated for male and female and only the results for the patient's gender in Epic are currently reported

New GFR Calculation

- The National Kidney Foundation has recommended a new equation for calculating eGFR in adults for all ethnicities
 1. Delgado C, et al. 2022 A Unifying Approach for GFR Estimation: Recommendations of the NKF-ASN Task Force on Reassessing the Inclusion of Race in Diagnosing Kidney Disease. Am J Kidney Dis 79(2):268-288
 2. Inker LA, et al. New creatinine- and cystatin C-based equations to estimate GFR without race. New Engl J Med 2021;385:1737-49

Reporting Update

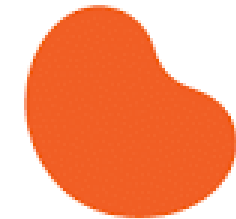
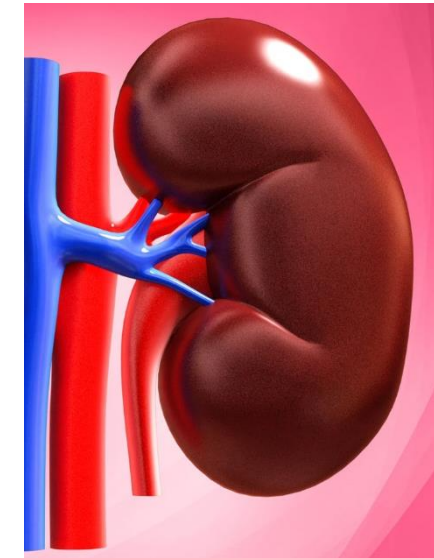
- With recognition that some patients do not self-identify as their biologic gender, both male and female eGFR values will be **reported for all patient results**
- Beginning May 26, 2022, eGFR for patients ages >18 will be reported in the **new reporting format** shown below:

Current Reporting Format

GFR Non African American 2009 CDK-EPI	>60 mL/min/1.73m ²	5 ▼
GFR African American 2009 CKD-EPI	>60 mL/min/1.73m ²	7 ▼

New Reporting Format

GFR Female 2021 CKD-EPI	>59 mL/min/1.73m ²	8 ▼
GFR Male 2021 CKD-EPI	>59 mL/min/1.73m ²	7 ▼



National
Kidney
Foundation™

For questions, please contact the Chemistry Department (464-6822 Downtown, 492-5531 Community)