

Blood Parasite Smear (formerly Blood Smear, Malaria)

- Starting 7/10/23, the Blood Smear, Malaria order (LAB2707) will be renamed Blood Parasite Smear
- This change was made to better reflect the various blood parasites that may be observed in peripheral smears (see images below)
- Initial analysis available 24/7; final review by Microbiology daily
- Specimen: EDTA (lavender top) anticoagulated whole blood
- If the initial smear is negative, CDC recommends collection of additional samples, 8-12 h apart, over 2-3 days
- PCR available via sendout for difficult cases
- Early involvement of the Infectious Disease service is imperative

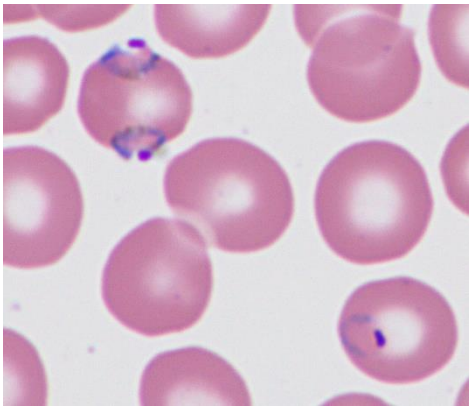
Old Order

Labs Shared	Blood Smear, Malaria	Microbiology	LAB2707
	Blood Smear, Malaria ONCE, today at 0836, For 1 occurrence Tier 1 (all credentialed providers)		

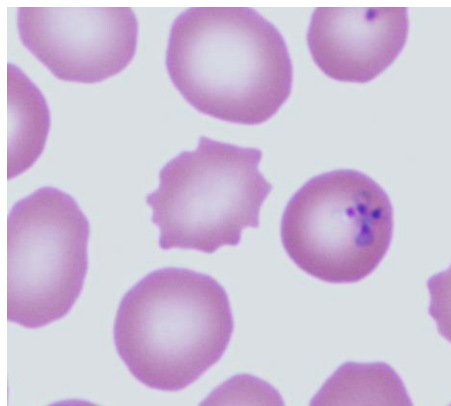
NEW ORDER

Labs Shared	Blood Parasite Smear	Microbiology	LAB2707
	Blood Parasite Smear ONCE, today at 1448, For 1 occurrence Tier 1 (all credentialed providers)		

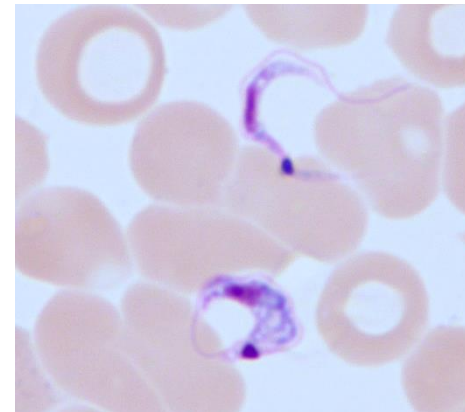
Plasmodium



Babesia



Trypanosoma



*Microfilaria**



*optimally detected following concentration; notify laboratory prior to submission

For questions, please contact the Microbiology Laboratory (464-4459)