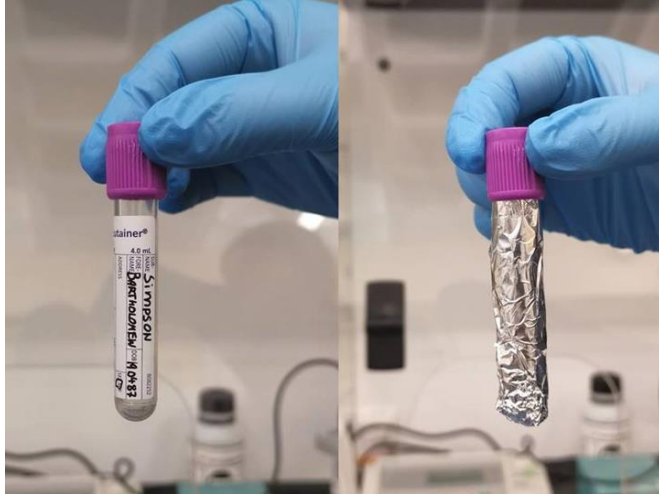


Light Sensitive Sample Collection



- Some tests require the specimen to be protected from light at the time of collection (as shown)
- New container codes have been created to indicate when the specified tests are *light sensitive* (LS)
- These samples should be collected, labelled, and immediately protected from light before sending to the laboratory for testing.

Reminder: labels must be placed on the tube itself, not on the aluminum foil

- The container description will include **LS** to provide a visual for light sensitive.
- The description of each container that will print on the lab labels when a sample should be protected from light are shown at the right

GoldLS



LtGrnLS



DGrNaLS



LavLS



TanLS



➤ An additional reminder will display for collection processes