

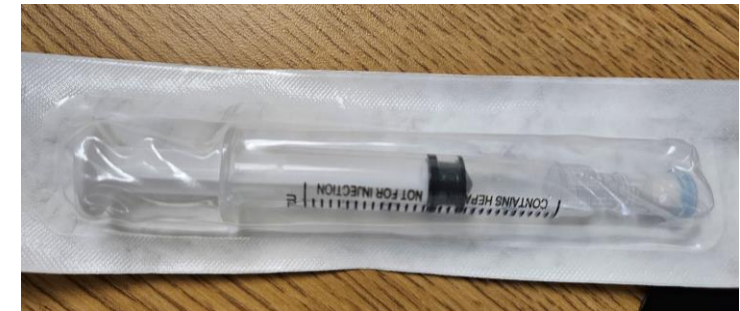
Venous Blood Gas Sample Collection Community Campus

Starting March 1, 2024

- Samples for blood gas evaluation must be drawn directly into heparinized syringes
- Vacutainers will NO longer be accepted



- Heparinized Syringes currently stocked in the ICU-ED-Surgery Center



For any questions, please contact the Laboratory (Downtown: 315-464-6791 or Community: 315-492-5531)

Peripheral Access Process

1. Select and assemble the appropriate equipment including a dry heparinized syringe
 - a. expel the air from dry heparin syringe
2. Cleanse site with Chloraprep™ 1.5 mL
3. Allow the site to air dry
4. Attach dry heparinized syringe to butterfly.
5. Enter the vein and aspirate specimen.
6. Apply sterile, dry gauze to puncture site and quickly withdraw needle.
7. Apply immediate pressure to the site to control bleeding.
8. Inspect the site to ensure that bleeding has stopped and apply a bandage.
9. Once specimen collected
 - a. Remove syringe from butterfly set
 - b. Remove air bubbles from syringe- prevents contamination of specimen
 - c. Cap syringe
 - d. Roll syringe back and forth between palms of hands for 30 seconds, then rotate wrist back and forth for 5 inversions to mix Heparin thoroughly in the sample
 - e. Place specimen on ice
10. Label syringe properly before leaving bedside and send to lab within 30 minutes.

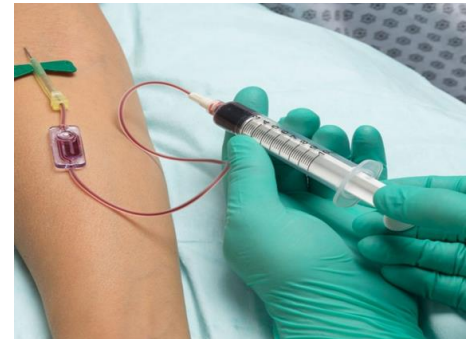
1



1a



4



9b

