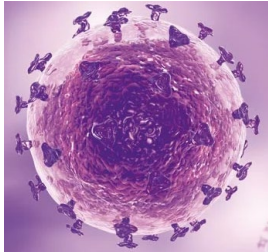


Varicella IgG antibody testing change



- Starting July 11th, 2025, the Upstate immunology laboratory will change the assay used to test for Varicella Zoster IgG antibodies (LAB162)
- This change is due to the prior assay's discontinuation
- The testing performance is similar between the 2 assays, but the reporting values are different

Current assay

INDEX	RESULTS	INTERPRETATION
<135.0 Index	Negative	Absence of detectable VZV IgG antibodies. A negative result indicates no detectable VZV antibody, but does not rule out acute infection. It should be noted that the test usually scores negative in infected patients during the incubation period and the early stages of infection. If exposure to varicella-zoster virus is suspected, despite a negative finding, a second sample should be collected and tested no less than one or two weeks later.
≥135.0 Index AND <165.0 Index	Equivocal	The equivocal sample should be repeat tested. In case the result remains in this range after repeat testing, a second sample should be collected.
≥165.0 Index	Positive	Presence of detectable VZV IgG antibodies. A positive generally indicates exposure to the pathogen or administration of specific immunoglobulins, but it is no indication of active infection or stage of the disease.

New assay

INDEX	RESULTS	INTERPRETATION
<1.0 S/CO	Negative	Absence of detectable VZV IgG antibodies. A negative result indicates no detectable VZV antibody, but does not rule out acute infection. It should be noted that the test usually scores negative in infected patients during the incubation period and the early stages of infection. If exposure to varicella-zoster virus is suspected, despite a negative finding, a second sample should be collected and tested no less than one or two weeks later.
≥1.0 S/CO	Positive	Presence of detectable VZV IgG antibodies. A positive generally indicates exposure to the pathogen or administration of specific immunoglobulins, but it is no indication of active infection or stage of the disease.

Varicella IgG Antibody - Routine

Verified at 7/9/2025 1045 by Kelly Costello

Res	Component	Value	Units	!	Δ	L	IE	R	Ref. Range	Method	Chart	PV
1	Varicella Igg Antibody	25.00	(index)	✓					<135.00	BKR Diasorin Liaison		140.00
Comment: Negative												

Varicella IgG Antibody - Routine

Verified at 7/10/2025 1030 by Kelly Costello

Res	Component	Value	Units	!	Δ	L	IE	R	Ref. Range	Method	Chart	PV
1	Varicella Igg Antibody	0.00	S/CO	✓					<1.00	BKR Diasorin Liaison		
Comment: Negative												

Contact the Core Laboratory for further information: 315-464-6764