

# Kleihauer-Betke Testing Change to In-house

- Kleihauer-Betke testing is performed whenever there is concern for fetal-maternal hemorrhage
- This testing quantifies the amount of fetal RBCs in the maternal blood stream
- This testing has been sent to an outside laboratory, resulting in delays in results and low reliability
- Starting **February 5<sup>th</sup>, 2026**, this testing will be performed by the Community Campus Blood Bank
- This change will allow greater consistency and reliability
- The Epic Order is unchanged

## The Epic Order



Labs Shared

Kleihauer-Betke stain

Lab

LAB123002

ONCE

## Epic Testing Results

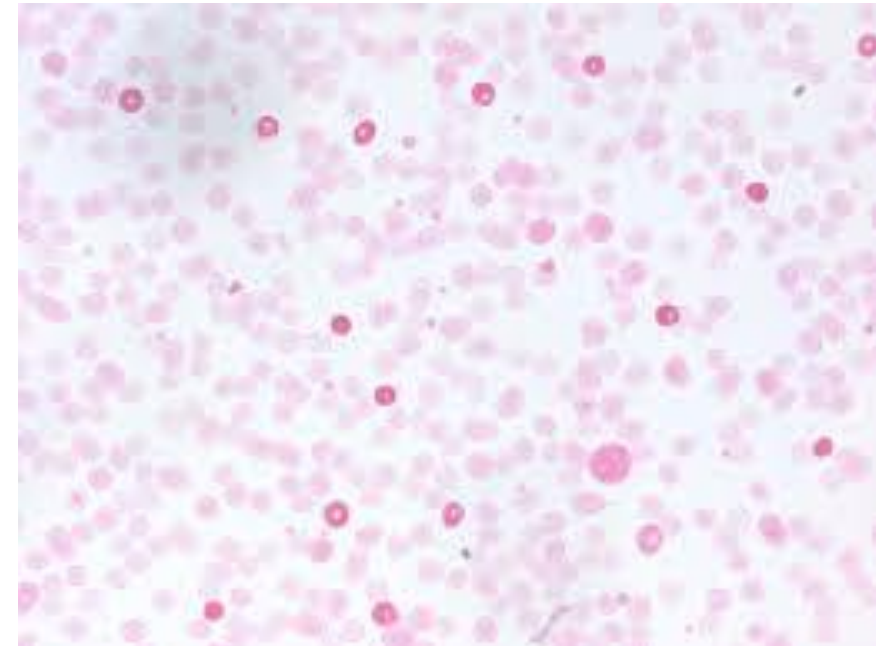
### Kleihauer-Betke stain

Collected 1/15/2026 14:56 Status: Final result Dx: Acidosis, unspecified

Test Result Released: No (inaccessible in MyChart)

### 0 Result Notes

Component	1/15/26 1456
Kleihauer-Betke Stain	LESS THAN 0.05% FETAL CELLS SEEN
Resulting Agency	SUNY



*For any questions, please contact the Community Campus Blood Bank (315-492-5287)*