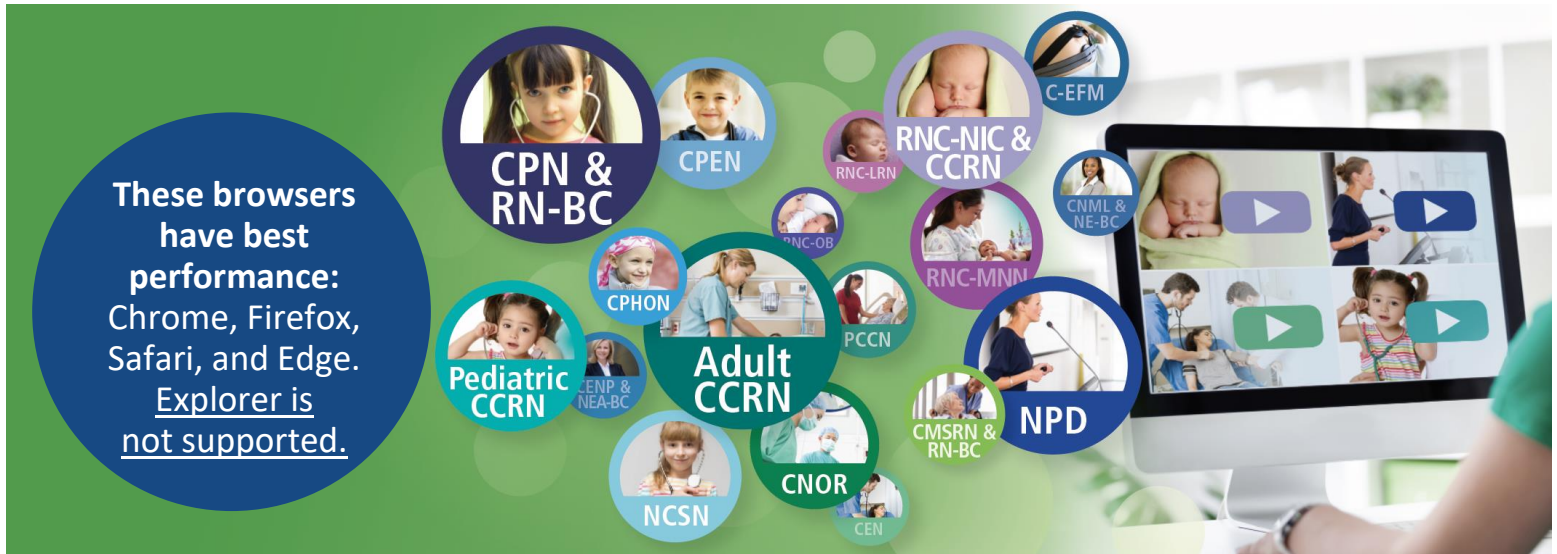


## SUNY Upstate Medical University Hospital Certification Review E-Courses User Login Instructions Year #1 (9/5/23 – 9/4/24)



These browsers  
have best  
performance:  
Chrome, Firefox,  
Safari, and Edge.  
Explorer is  
not supported.

### USER LOGIN INSTRUCTIONS

#### Creating an Initial Account (first time you login):

1. Create an account with the QR code or by pasting the link below into your browser:



<https://learn.nursebuilders.net/sunyupstatecertification012023>

2. Create an account to enroll in the course by entering your name, email, and password.
3. Then click the **“Enroll Now”** button.
4. Once enrolled, you will have access to your e-course so long as it is within the annual license period (expires 9/4/24).

#### **IMPORTANT!** To Access Your Account After INITIAL ACCOUNT SET UP ABOVE:

5. Go to <http://ecourses.nursebuilders.net> (no www at beginning)
6. Select “sign in” and use the **email** and **password you created to sign in** when you created your account above).

If you have difficulty or questions, please email Nurse Builders at [coursequestions@nursebuilders.net](mailto:coursequestions@nursebuilders.net)

#### Certification Review E-Courses Included

- Adult CCRN
- PCCN
- CMSRN & RN-BC
- CEN
- CNOR
- CNRN
- SCRN
- AMB-BC
- CPN & RN-BC
- Pediatric CCRN
- CPEN
- CPHON
- NCSN
- C-ELBW
- RNC-NIC
- RNC-LRN
- RNC-MNN
- RNC-OB
- C-EFM
- CNE
- NPD
- CNML & NE-BC
- CENP & NEA-BC